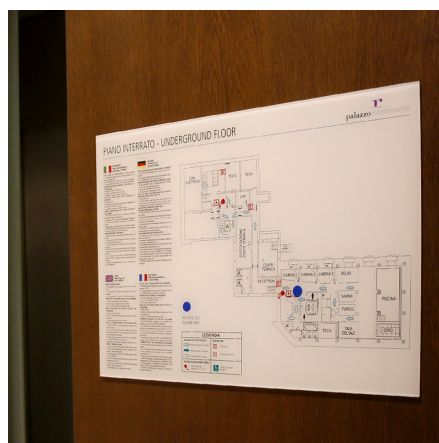
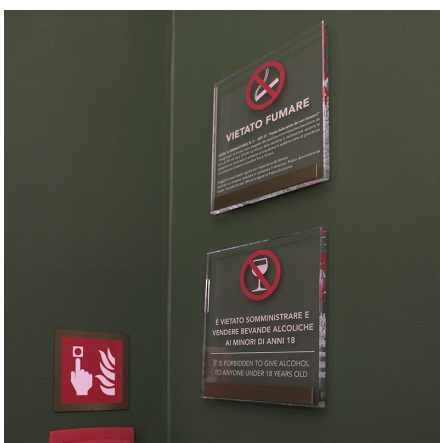
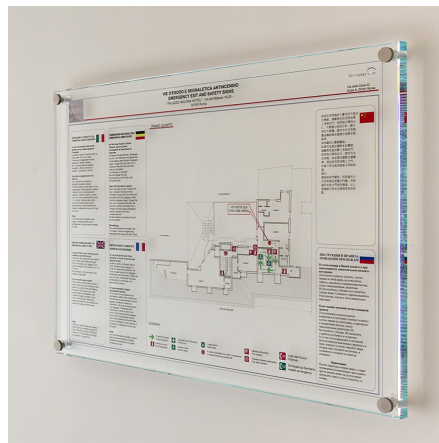
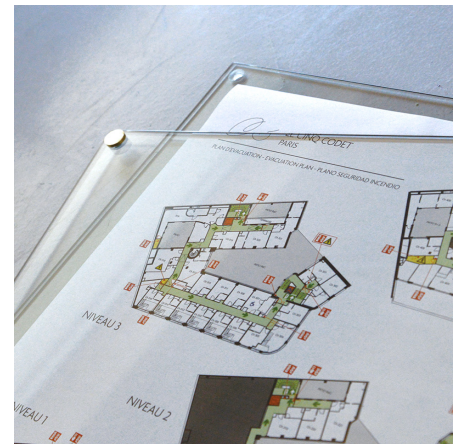


VERRE-NORME

Linea di segnaletica di sicurezza e antincendio in vetro con dettagli in alluminio anodizzato. Testi e planimetrie personalizzabili e stampati in quadricromia. Materiali: vetro con finiture in alluminio anodizzato. Diversi formati disponibili e dimensioni personalizzabili in base alle esigenze. Finitura dei dettagli in alluminio anodizzato: metallica ottone o acciaio satinato. Dimensioni standard modificabili e adattabili alle esigenze.



Versione



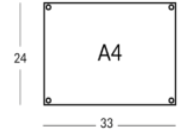
Targa norme di sicurezza 14x16 cm



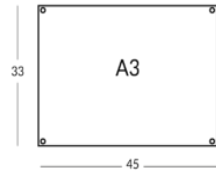
Targa norme di sicurezza 14x32 cm



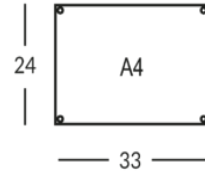
Targa norme di sicurezza 20x22 cm



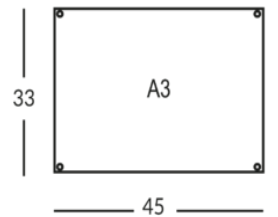
Targa con stampa norme A4



Targa con stampa norme A2



Doppio vetro portainformazioni A4

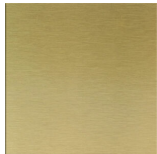


Doppio vetro portainformazioni A3

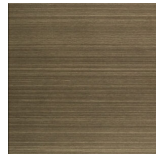
Finiture metalliche | Metal finishes | Finitions métalliques



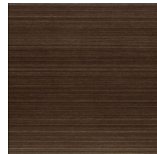
OTLUC
Ottone lucido



OTSAT
Ottone satinato lucido



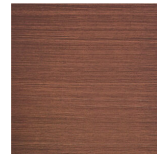
OTBRC
Ottone bronzato chiaro opaco



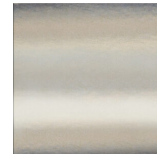
OTBRS
Ottone bronzato scuro opaco



OTANS
Ottone antico nero opaco



RAANT Rame satinato antico opaco



ACLUC
Acciaio lucido

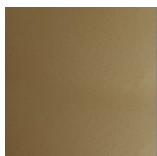


ACSAT
Acciaio satinato opaco

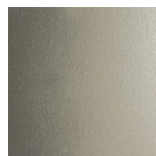
Finiture verniciate | Symbols | Symboles



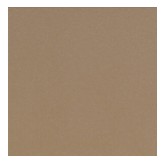
Oro



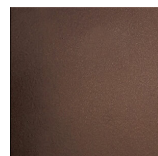
Oro antico



Anticato chiaro



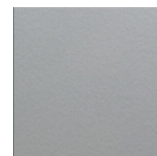
Tortora (RAL 1019)



Bronzo



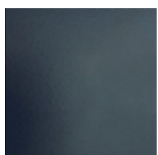
Simil corten



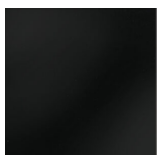
Argento



Canna di fucile



Grigio scuro (RAL 7016)



Nero opaco (RAL 9005)



Nero lucido (RAL 9005)



Bianco opaco (RAL 9010)



Bianco lucido (RAL 9010)



RAL

