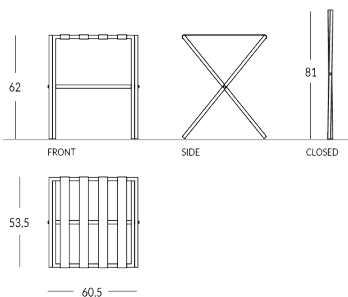


LUG

Reggivaligia pieghevole in metallo. Materiale struttura: metallo con profilo rotondo. Materiale cinghie: tessuto High-Tech disponibile in diverse colorazioni. Finitura struttura: metallica (acciaio, ottone o rame) oppure verniciata nei colori APIR o in qualsiasi colore della scala RAL. Piedini in gomma. Struttura pieghevole per minimizzare l'ingombro. Altezza aperto: 62 cm Altezza chiuso: 81 cm Larghezza: 60,5 cm Profondità aperto: 53,5 cm Peso: 3,3 kg



Versione



Standard

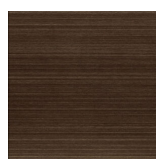
Finiture metalliche | Metal finishes | Finitions métalliques



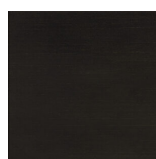
OTLUC
Ottone lucido



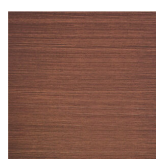
OTBRC
Ottone
bronzato
chiaro opaco



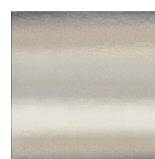
OTBRS
Ottone
bronzato
scuro opaco



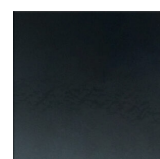
OTANS
Ottone antico
nero opaco



RAANT Rame
satinato
anticato
opaco



ACLUC
Acciaio lucido

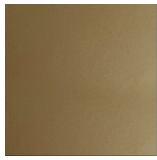


ACIND
Acciaio
industriale

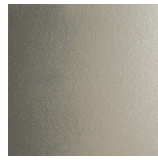
Finiture verniciate | Painted finishes | Finitions peintes



Oro



Oro antico



Anticato
chiaro



Tortora (RAL
1019)



Bronzo



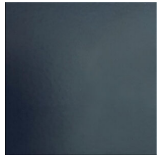
Simil corten



Argento



Canna di
fucile



Grigio scuro
(RAL 7016)



Nero opaco
(RAL 9005)



Nero lucido
(RAL 9005)



Bianco opaco
(RAL 9010)



Bianco lucido
(RAL 9010)

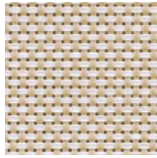


RAL

Colore cinghie High-Tech | Strap colour | Couleur de courroies



High-Tech
Grey



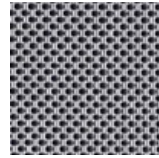
High-Tech
Sand



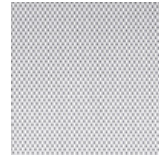
High-Tech
Safari



High-Tech
Deep Black



High-Tech
Hypnotic Grey



High-Tech
Glace