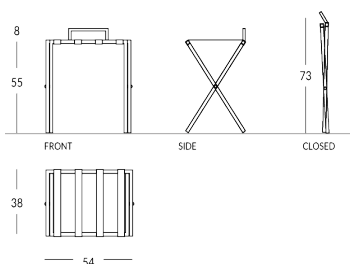


## CASE/S

Reggivaligia pieghevole personalizzabile con sponda salvamuro. Materiale struttura: metallo con profilo quadrato e piedini in gomma. Materiale cinghie: tessuto High Tech oppure vero cuoio, disponibili in diverse colorazioni. Finitura struttura: metallica (acciaio o ottone) oppure verniciata nei colori Apir o in qualsiasi colore della scala RAL. Struttura pieghevole per minimizzare l'ingombro. Altezza aperto: 55 cm Altezza chiuso: 73 cm Larghezza: 54 cm Profondità aperto: 38 cm Peso: 4,2 kg



### Versione



CASE/S-SML

## Finiture metalliche | Metal finishes | Finitions métalliques



OTLUC  
Ottone lucido

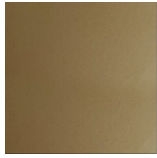


ACLUC  
Acciaio lucido

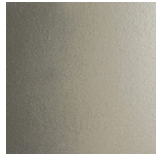
## Finiture verniciate | Painted finishes | Finitions peintes



Oro



Oro antico



Anticato  
chiaro



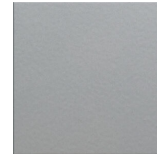
Tortora (RAL  
1019)



Bronzo



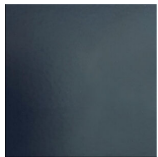
Simil corten



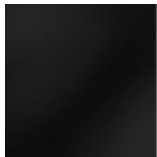
Argento



Canna di  
fucile



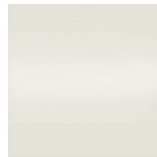
Grigio scuro  
(RAL 7016)



Nero opaco  
(RAL 9005)



Nero lucido  
(RAL 9005)



Bianco opaco  
(RAL 9010)

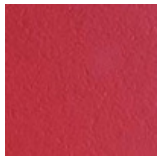


Bianco lucido  
(RAL 9010)

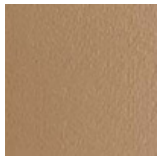


RAL

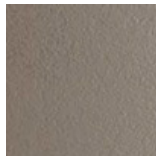
## Colore cinghie cuoio | Strap colour | Couleur de courroies



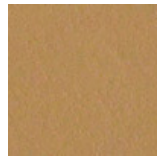
Rosso



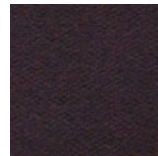
Talpa



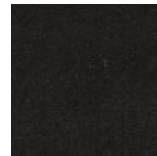
Fango



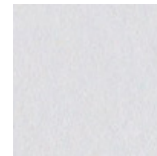
Cuoio



Testa di moro

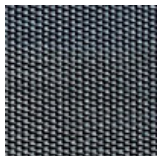


Nero

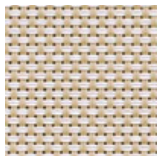


Bianco

## Colore cinghie High-Tech



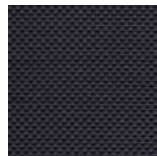
High-Tech  
Grey



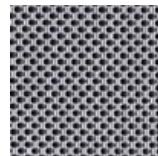
High-Tech  
Sand



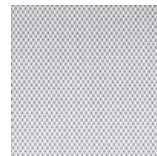
High-Tech  
Safari



High-Tech  
Deep Black



High-Tech  
Hypnotic Grey



High-Tech  
Glace