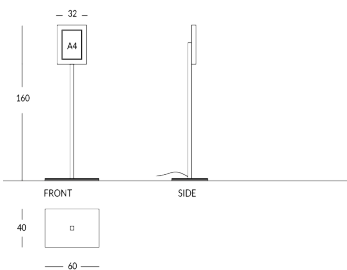


LONDBS

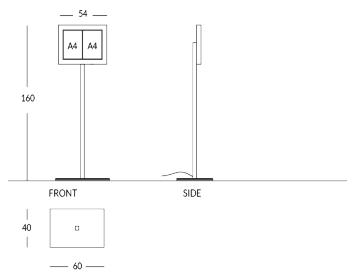
Bacheca porta menu da esterno con base a terra, dotata di chiusura ermetica e serratura con chiave. Formati disponibili: A4 singolo, 2 A4 affiancati, 3 A4 affiancati. Materiale espositore: acciaio inox 316 oppure ottone, finestra in vetro. Finiture metalliche: acciaio lucido, acciaio satinato o ottone lucido. Finitura verniciata: verniciatura nei colori APIR o in qualsiasi tonalità della scala RAL. Possibilità di personalizzazione con logo del ristorante o testo, font e colore a scelta. Altezza: 160 cm Base rettangolare: 60 x 40 cm Formati disponibili: LONDBS-SML 1 A4 32 x 41 cm; LONDBS-MED 2 A4 54 x 41 cm; LONDBS-BIG 3 A4 75 x 41 cm. Peso: LONDBS-MED: 23,8 kg ; LONDBS-BIG: 36 kg. Disposizione orizzontale.



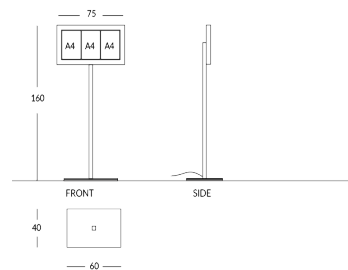
Versione



LONDBS-SML



LONDBS-MED



LONDBS-BIG

Finiture metalliche | Metal finishes | Finitions métalliques



OTLUC
Ottone lucido



OTBRC
Ottone
bronzato
chiaro opaco



OTBRS
Ottone
bronzato
scuro opaco

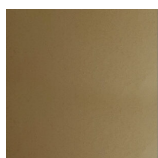


ACSAT
Acciaio
satinato
opaco

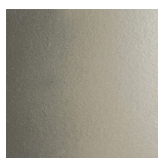
Finiture verniciate | Painted finishes | Finitions peintes



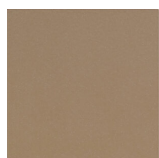
Oro



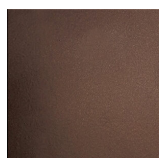
Oro antico



Anticato
chiaro



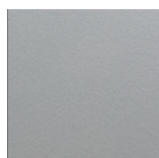
Tortora (RAL
1019)



Bronzo



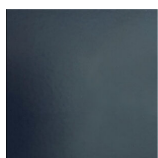
Simil corten



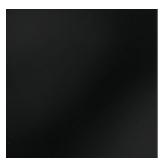
Argento



Canna di
fucile



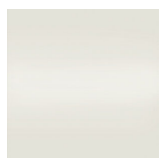
Grigio scuro
(RAL 7016)



Nero opaco
(RAL 9005)



Nero lucido
(RAL 9005)



Bianco opaco
(RAL 9010)



Bianco lucido
(RAL 9010)



RAL