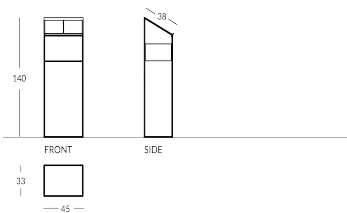


FRIEDA-POD

Leggio in metallo della Collezione Frieda. Struttura a perimetro rettangolare con quattro barre in metallo, ripiano informativo inclinato e secondo ripiano intermedio. Finiture disponibili: - metallica: effetto ottone, acciaio o rame - verniciatura nei colori Apir o in qualsiasi colorazione RAL Altezza: 140 cm Base rettangolare: 45 x 33 cm Superficie di appoggio: 38 cm Peso: 9,8 kg

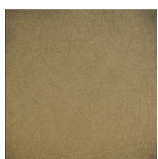


Versione



Standard

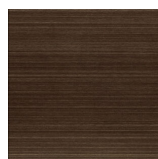
Finiture metalliche | Metal finishes | Finitions métalliques



OTIND
Ottone
industriale



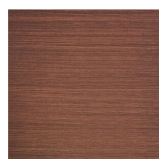
OTBRC
Ottone
bronzato
chiaro opaco



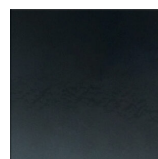
OTBRS
Ottone
bronzato
scuro opaco



OTANS
Ottone antico
nero opaco



RAANT Rame
satinato
antico
opaco

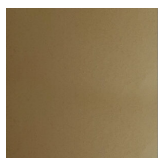


ACIND
Acciaio
industriale

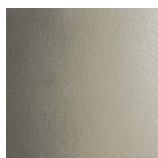
Finiture verniciate | Painted finishes | Finitions peintes



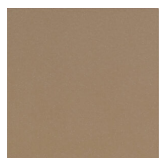
Oro



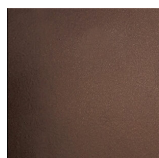
Oro antico



Anticato
chiaro



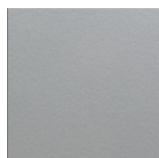
Tortora (RAL
1019)



Bronzo



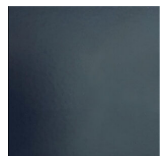
Simil corten



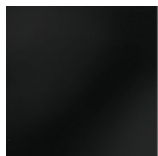
Argento



Canna di
fucile



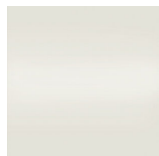
Grigio scuro
(RAL 7016)



Nero opaco
(RAL 9005)



Nero lucido
(RAL 9005)



Bianco opaco
(RAL 9010)



Bianco lucido
(RAL 9010)



RAL